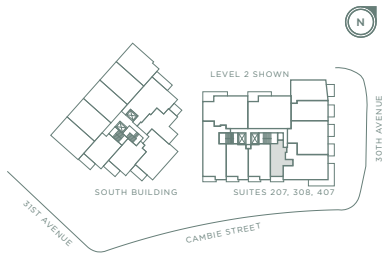
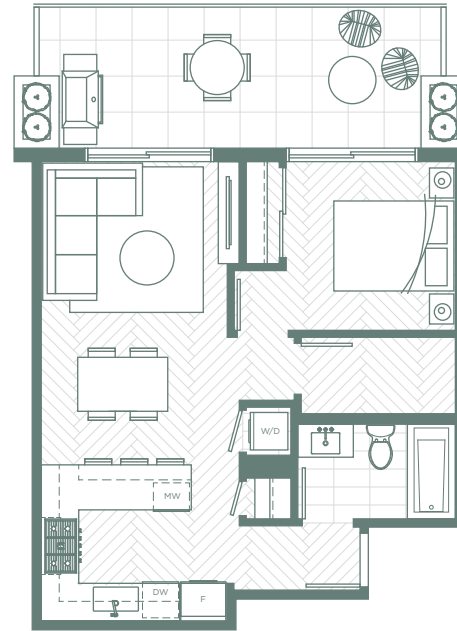


Studio

STUDIO + STORAGE, 1 BATH
INTERIOR AREA: 461 SF
EXTERIOR AREA: 59 SF

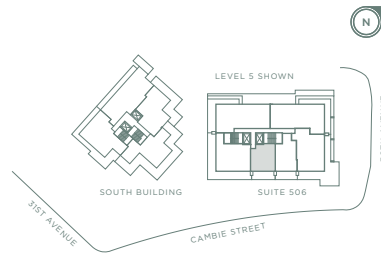


The developer reserves the right to modify or make substitutes to the building design, specifications and floorplans should they be necessary. Renderings, views, and layouts are for illustration purposes only. Sales by MLA Canada Realty, E.B.O.E.

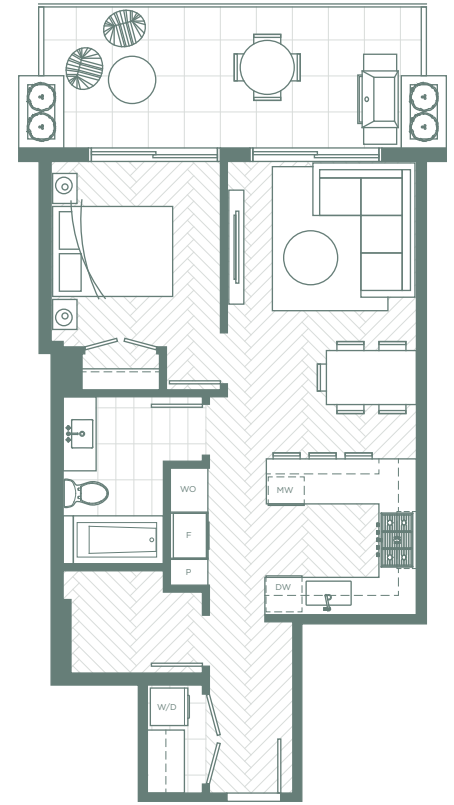


Plan A

1 BEDROOM + STORAGE, 1 BATH
INTERIOR AREA: 581 SF
EXTERIOR AREA: 171 SF

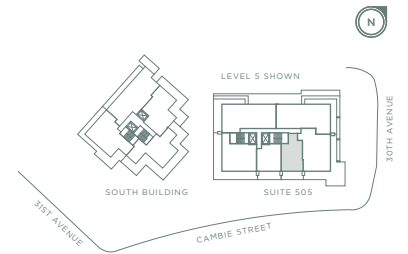


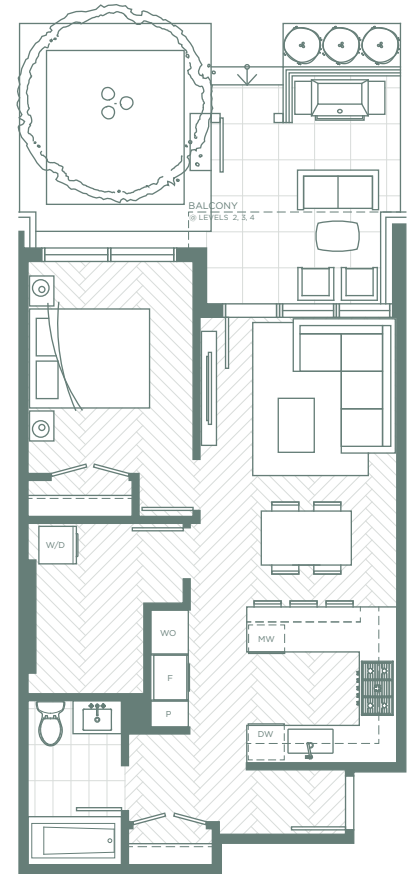
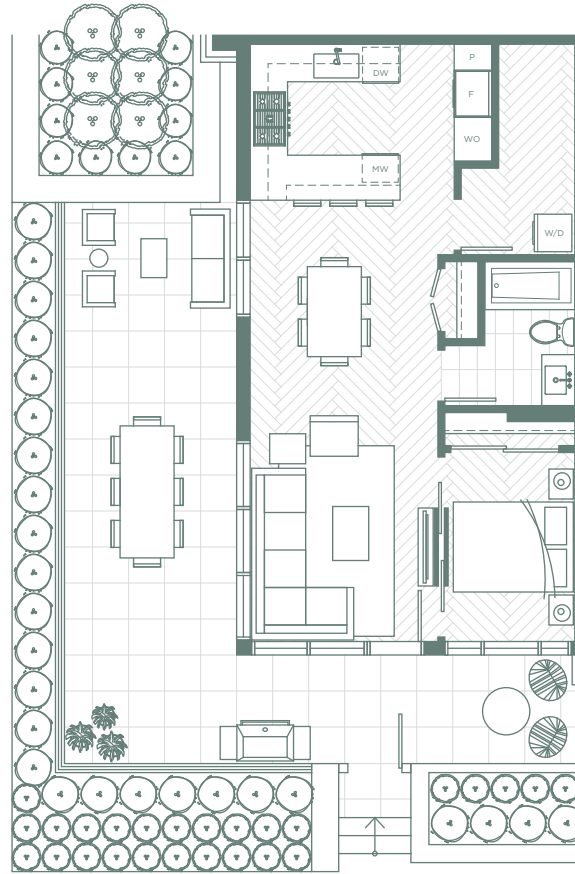
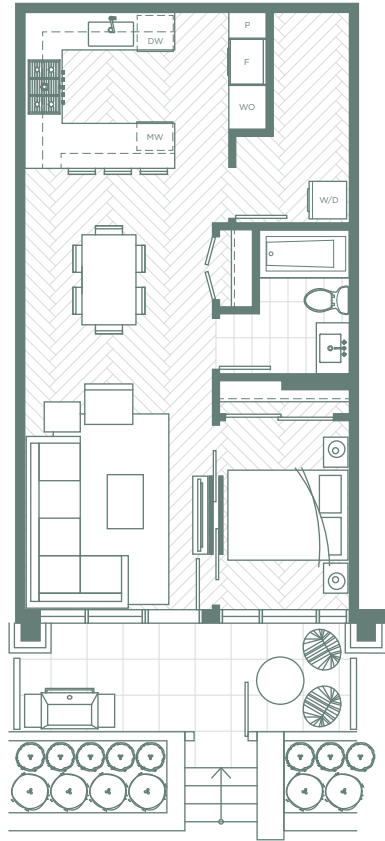
The developer reserves the right to modify or make substitutes to the building design, specifications and floorplans should they be necessary. Renderings, views, and layouts are for illustration purposes only. Sales by MLA Canada Realty, E.B.O.E.



Plan A1

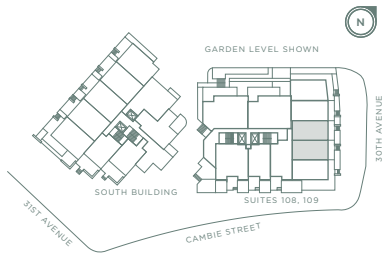
1 BEDROOM + STORAGE, 1 BATH
INTERIOR AREA: 639 SF
EXTERIOR AREA: 159 SF





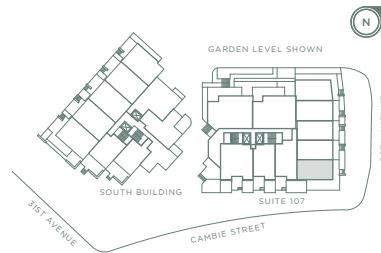
Plan A2

1 BEDROOM + STORAGE, 1 BATH
INTERIOR AREA: 639-646 SF
EXTERIOR AREA: 107 SF



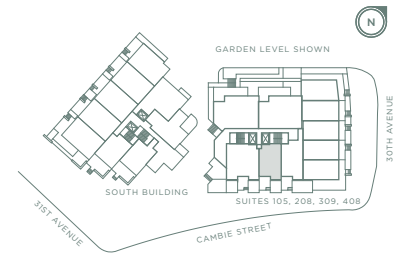
Plan A3

1 BEDROOM + STORAGE, 1 BATH
INTERIOR AREA: 646 SF
EXTERIOR AREA: 412 SF

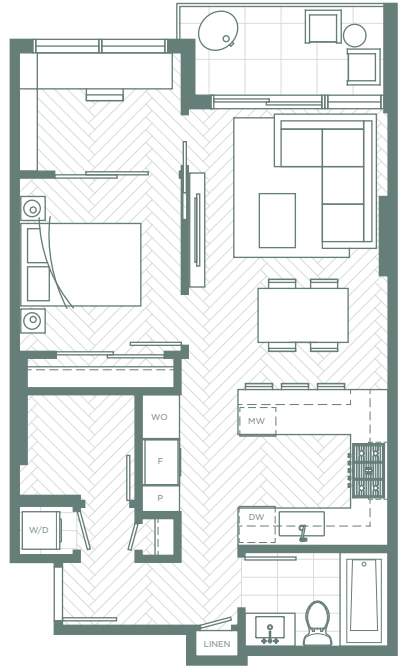


Plan A4

1 BEDROOM + STORAGE, 1 BATH
INTERIOR AREA: 664 SF
EXTERIOR AREA: 55-117 SF

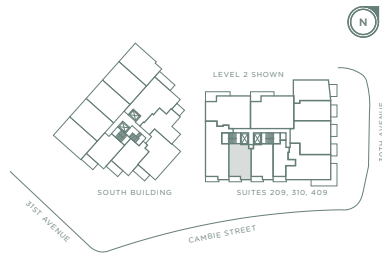


The developer reserves the right to modify or make substitutes to the building design, specifications and floorplans should they be necessary. Renderings, views, and layouts are for illustration purposes only. Sales by MLA Canada Realty, E.B.O.E.

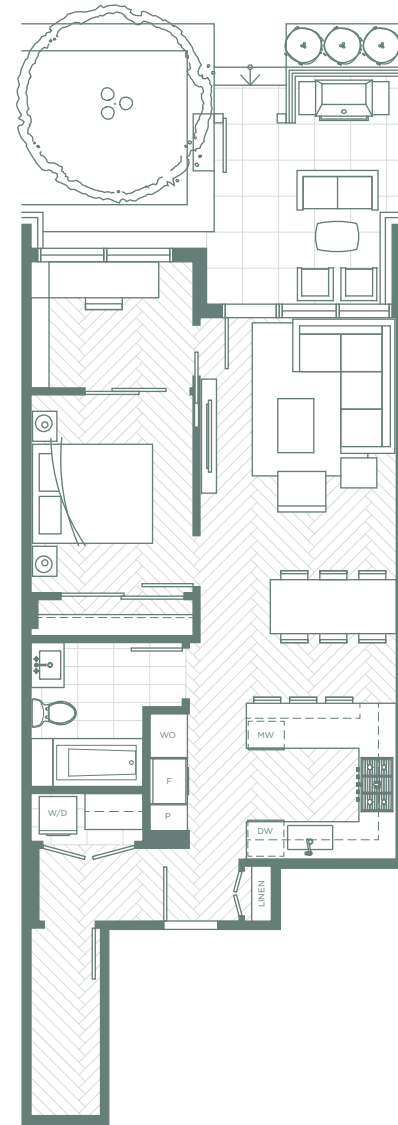


Plan B

1 BEDROOM + DEN + STORAGE, 1 BATH
INTERIOR AREA: 665 SF
EXTERIOR AREA: 55 SF

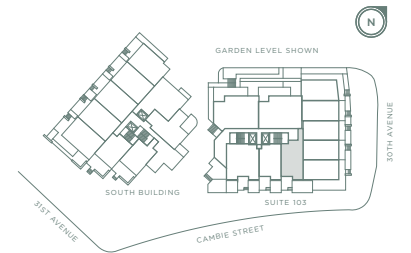


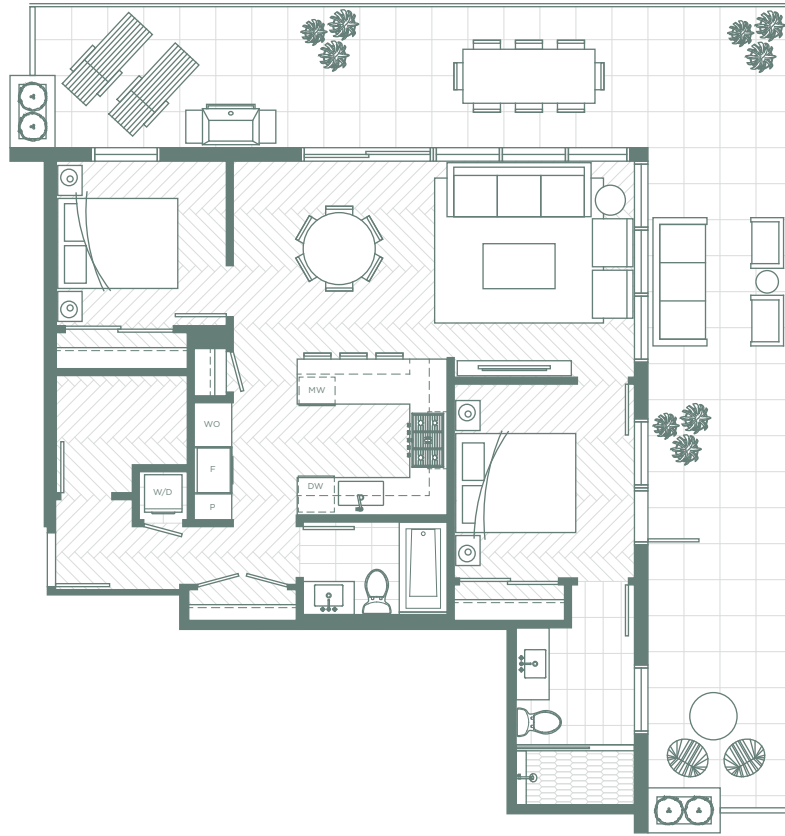
The developer reserves the right to modify or make substitutes to the building design, specifications and floorplans should they be necessary. Renderings, views, and layouts are for illustration purposes only. Sales by MLA Canada Realty, E.B.O.E.



Plan B1

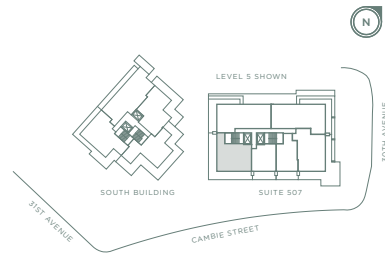
1 BEDROOM + DEN + STORAGE, 1 BATH
INTERIOR AREA: 781 SF
EXTERIOR AREA: 115 SF



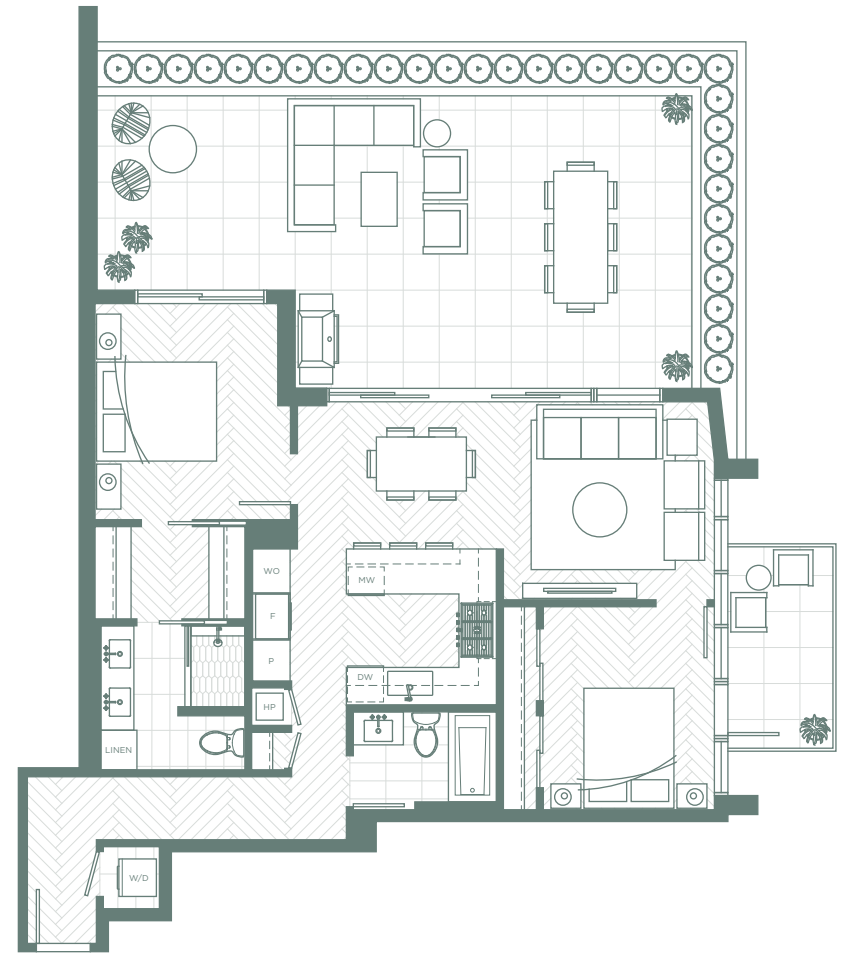


Plan C

2 BEDROOM + STORAGE, 2 BATH
INTERIOR AREA: 941 SF
EXTERIOR AREA: 621 SF

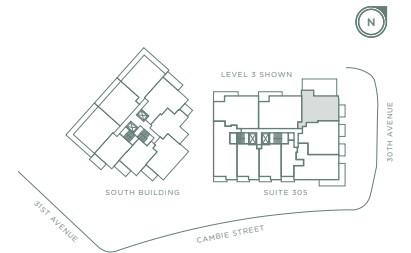


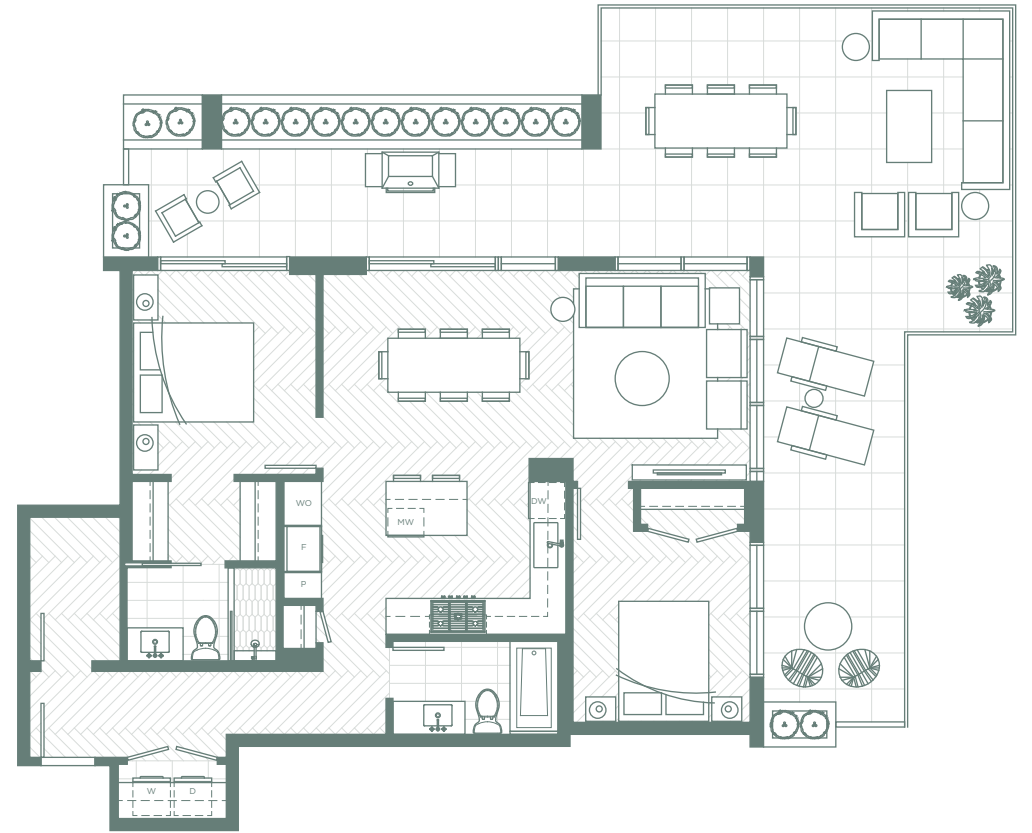
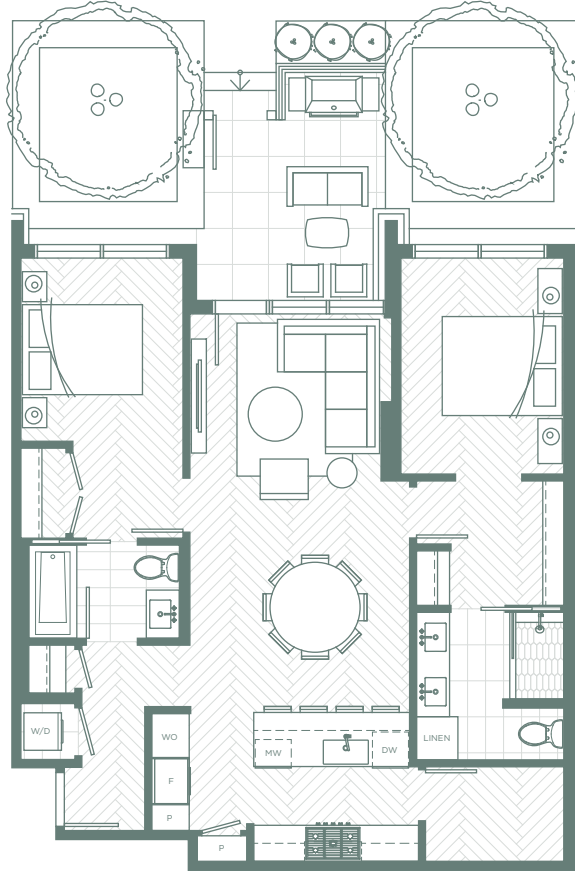
The developer reserves the right to modify or make substitutes to the building design, specifications and floorplans should they be necessary. Renderings, views, and layouts are for illustration purposes only. Sales by MLA Canada Realty, E.B.O.E.



Plan C1

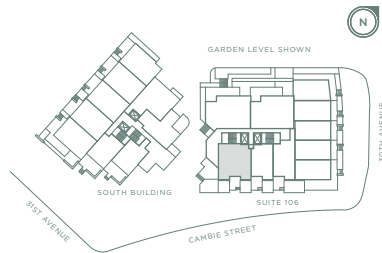
2 BEDROOM, 2 BATH
INTERIOR AREA: 974 SF
EXTERIOR AREA: 546 SF





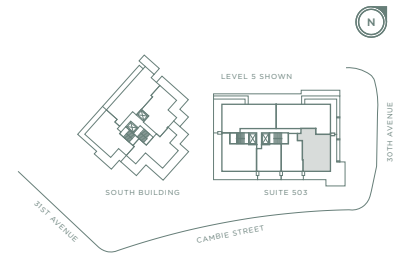
Plan C2

2 BEDROOM + STORAGE, 2 BATH
INTERIOR AREA: 1,001 SF
EXTERIOR AREA: 115 SF

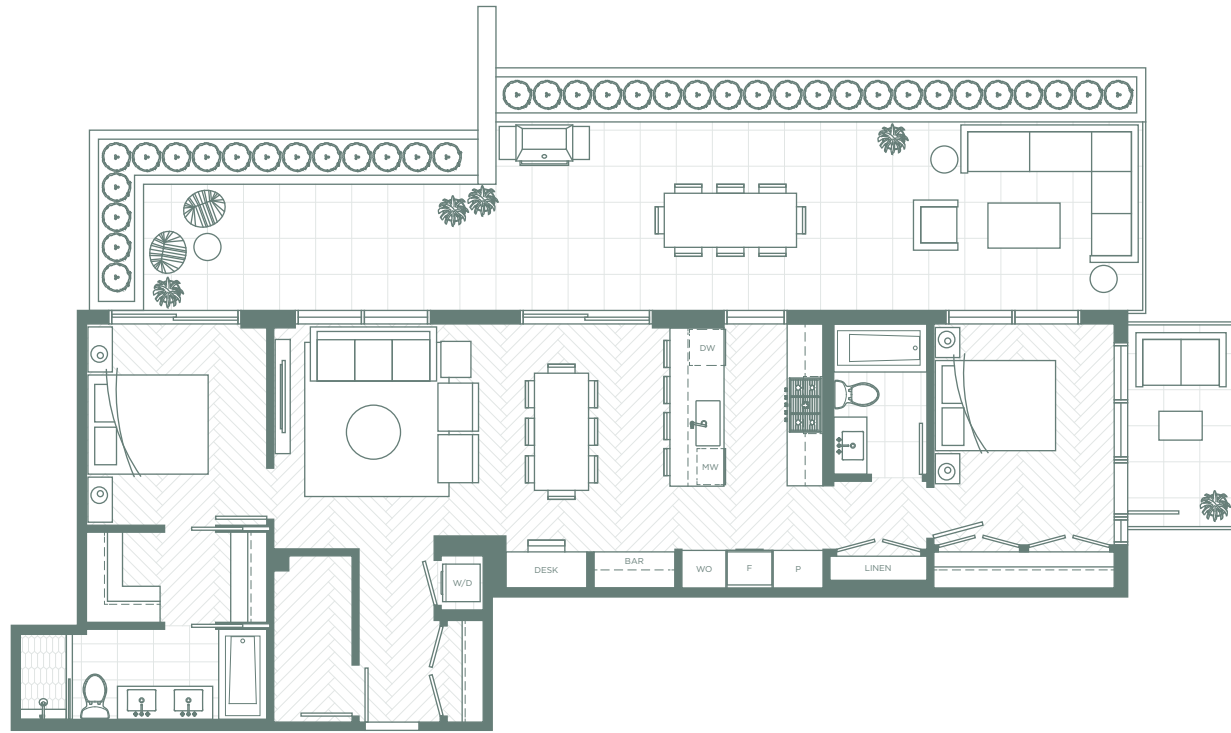


Plan C3

2 BEDROOM + STORAGE, 2 BATH
INTERIOR AREA: 1,046 SF
EXTERIOR AREA: 706 SF

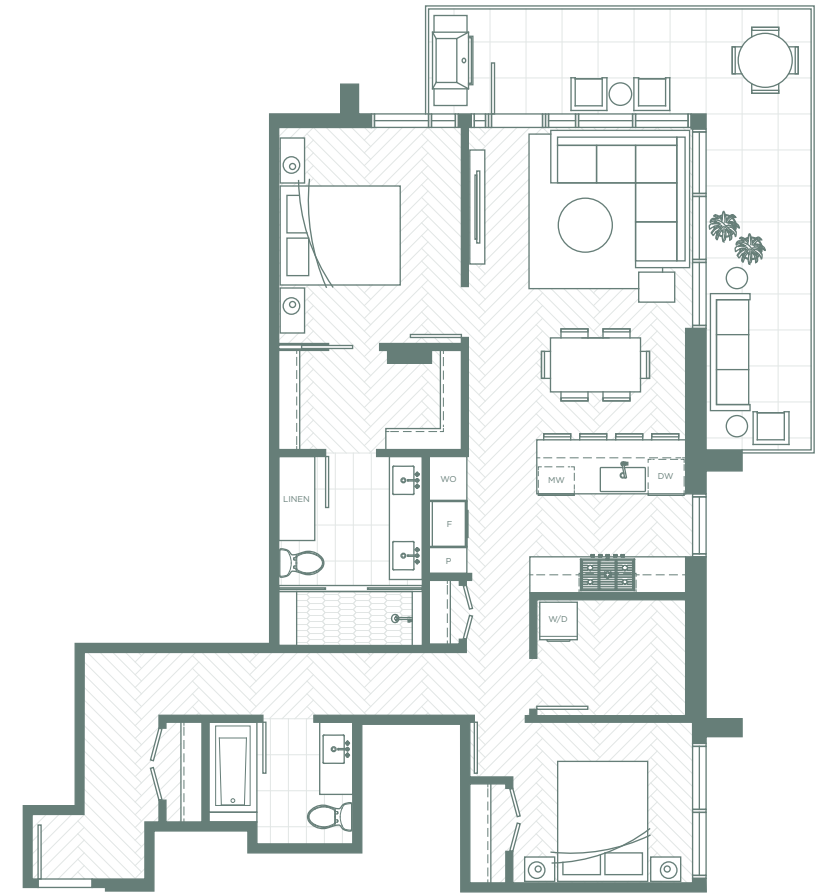
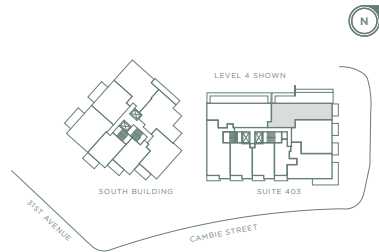


The developer reserves the right to modify or make substitutes to the building design, specifications and floorplans should they be necessary. Renderings, views, and layouts are for illustration purposes only. Sales by MLA Canada Realty, E.B.O.E.



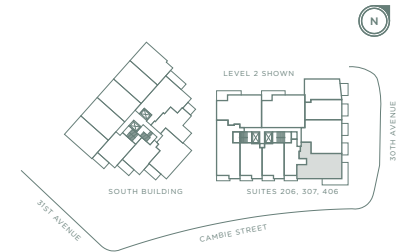
Plan C4

2 BEDROOM + STORAGE, 2 BATH
INTERIOR AREA: 1,094 SF
EXTERIOR AREA: 546 SF



Plan C5

2 BEDROOM + STORAGE, 2 BATH
INTERIOR AREA: 1,100 SF
EXTERIOR AREA: 241 SF



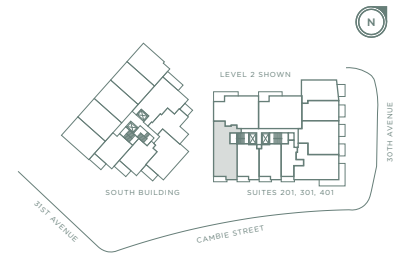
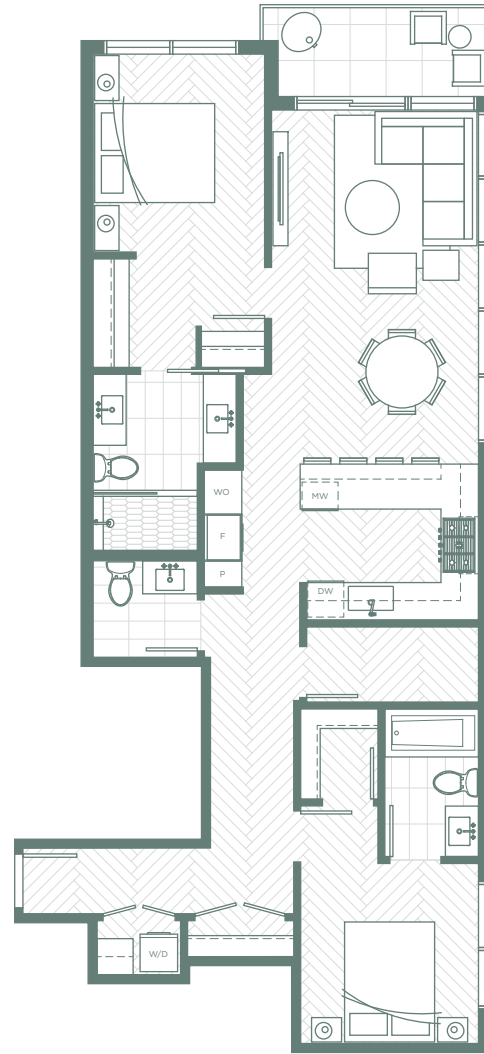
The developer reserves the right to modify or make substitutes to the building design, specifications and floorplans should they be necessary. Renderings, views, and layouts are for illustration purposes only. Sales by MLA Canada Realty, E.B.O.E.



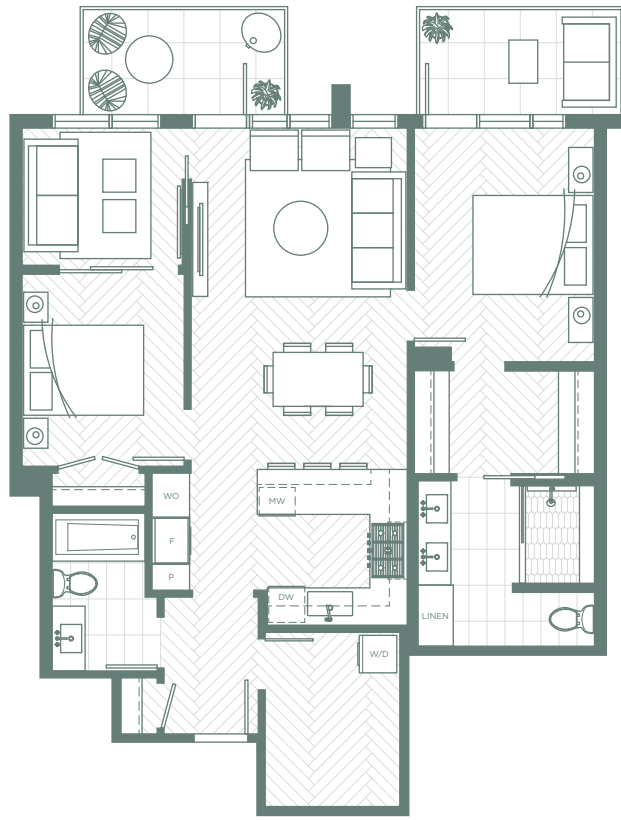
TWO BEDROOMS / Plan C6

Plan C6

2 BEDROOM + STORAGE, 2.5 BATH
INTERIOR AREA: 1,102-1,113 SF
EXTERIOR AREA: 63 SF

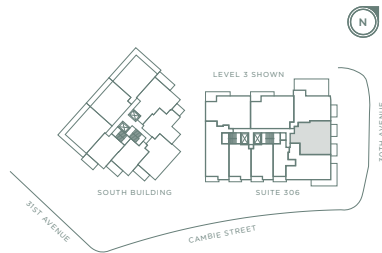


The developer reserves the right to modify or make substitutes to the building design, specifications and floorplans should they be necessary. Renderings, views, and layouts are for illustration purposes only. Sales by MLA Canada Realty, E.B.O.E.

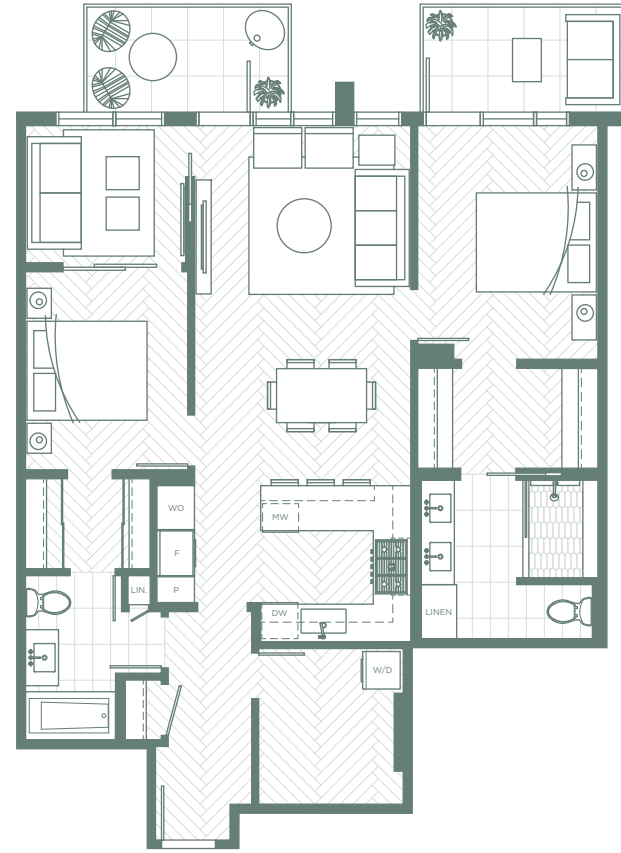


Plan D

2 BEDROOM + DEN + STORAGE, 2 BATH
INTERIOR AREA: 1,062 SF
EXTERIOR AREA: 138 SF

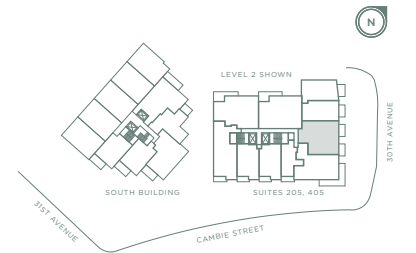


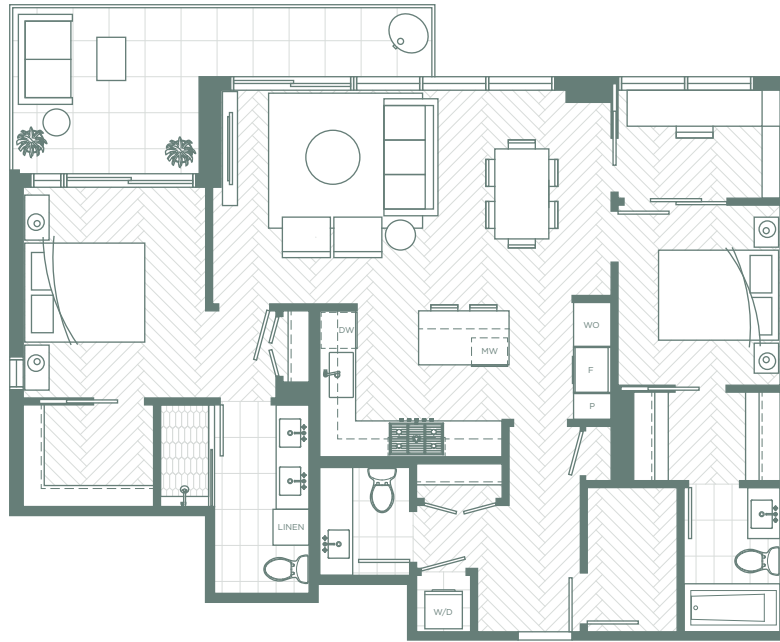
The developer reserves the right to modify or make substitutes to the building design, specifications and floorplans should they be necessary. Renderings, views, and layouts are for illustration purposes only. Sales by MLA Canada Realty, E.B.O.E.



Plan D1

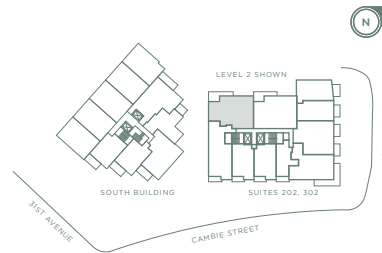
2 BEDROOM + DEN + STORAGE, 2 BATH
INTERIOR AREA: 1,129-1,139 SF
EXTERIOR AREA: 138 SF



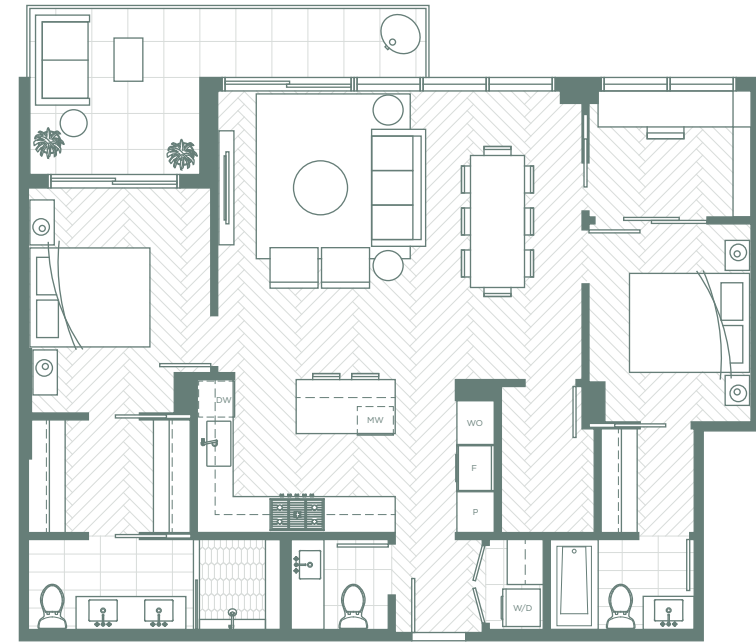


Plan D2

2 BEDROOM + DEN + STORAGE, 2.5 BATH
INTERIOR AREA: 1,174 SF
EXTERIOR AREA: 151 SF

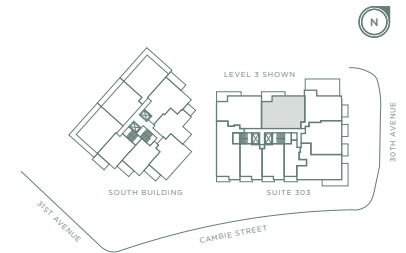


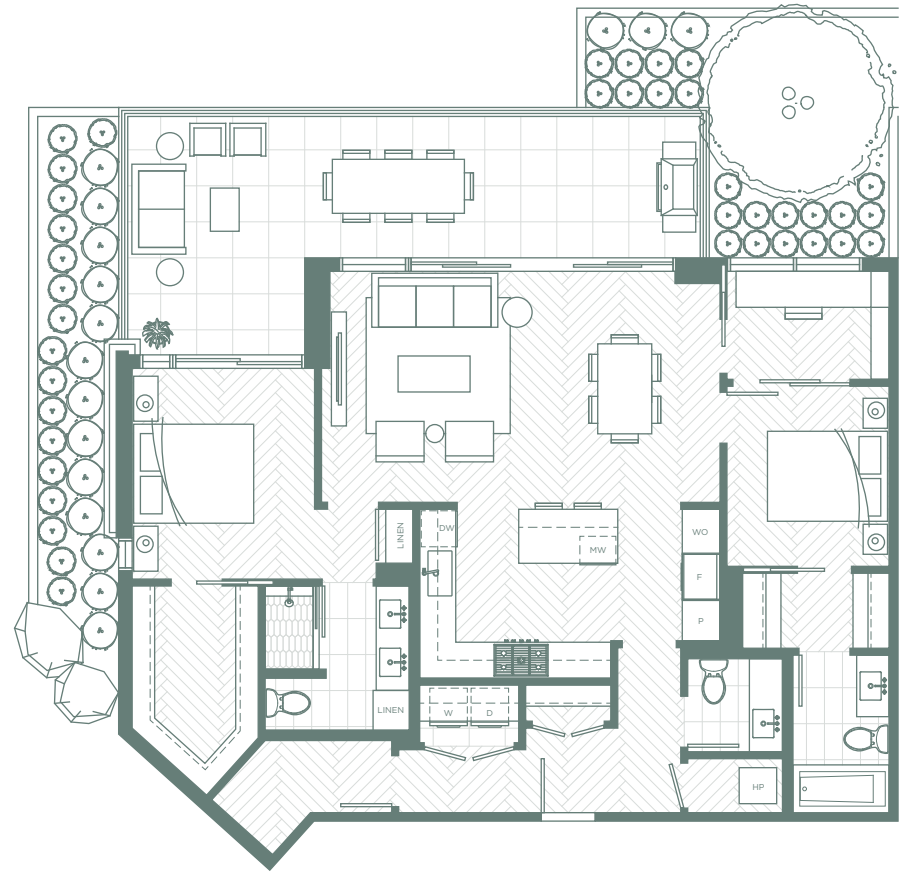
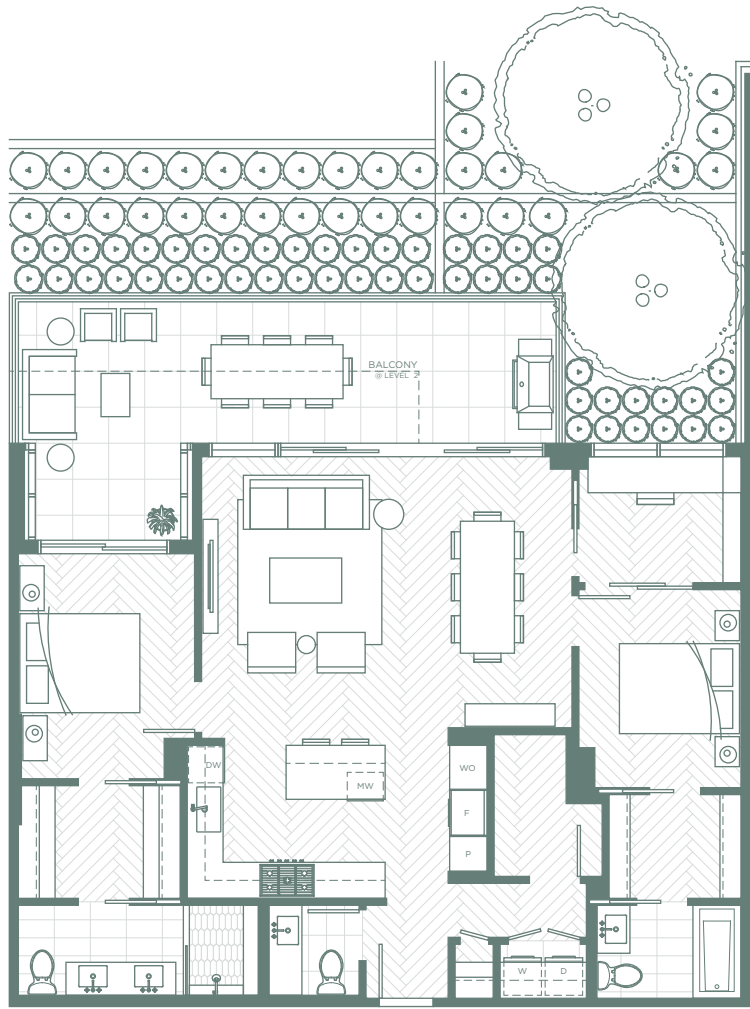
The developer reserves the right to modify or make substitutes to the building design, specifications and floorplans should they be necessary. Renderings, views, and layouts are for illustration purposes only. Sales by MLA Canada Realty, E.B.O.E.



Plan D3

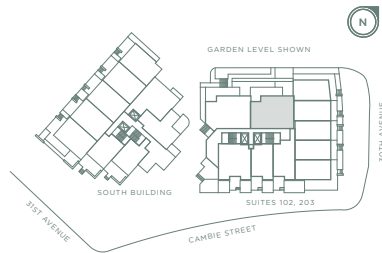
2 BEDROOM + DEN + STORAGE, 2.5 BATH
INTERIOR AREA: 1,183 SF
EXTERIOR AREA: 141 SF





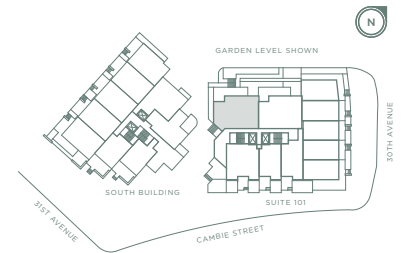
Plan D4

2 BEDROOM + DEN + STORAGE, 2.5 BATH
INTERIOR AREA: 1,220 SF
EXTERIOR AREA: 144-278 SF

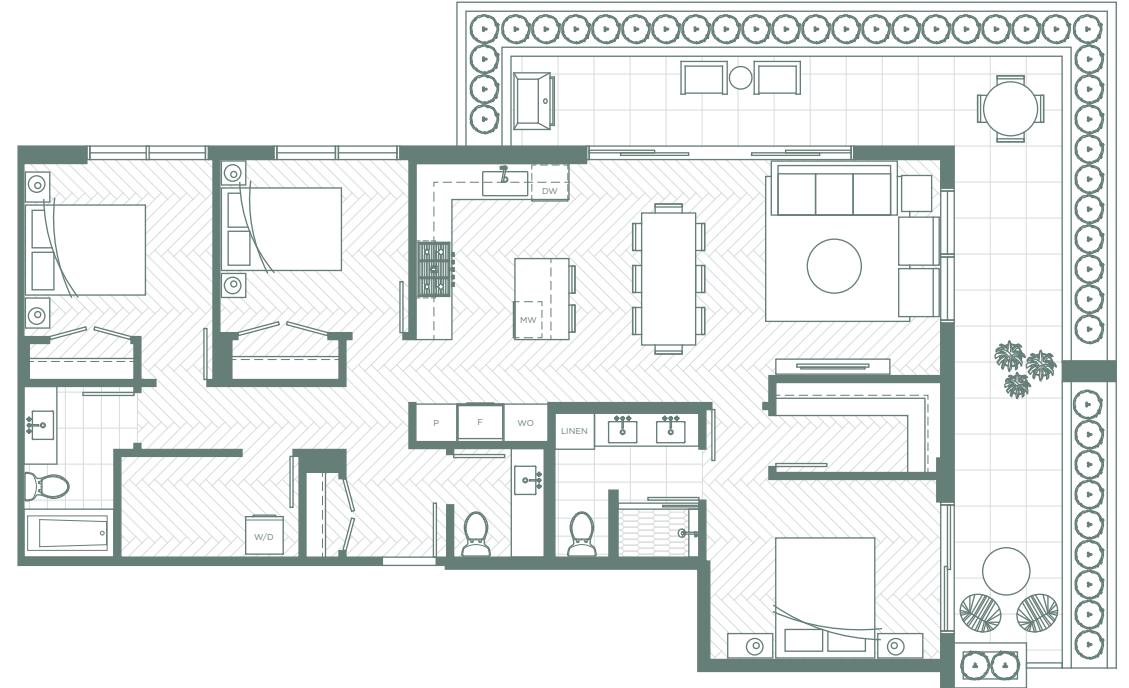
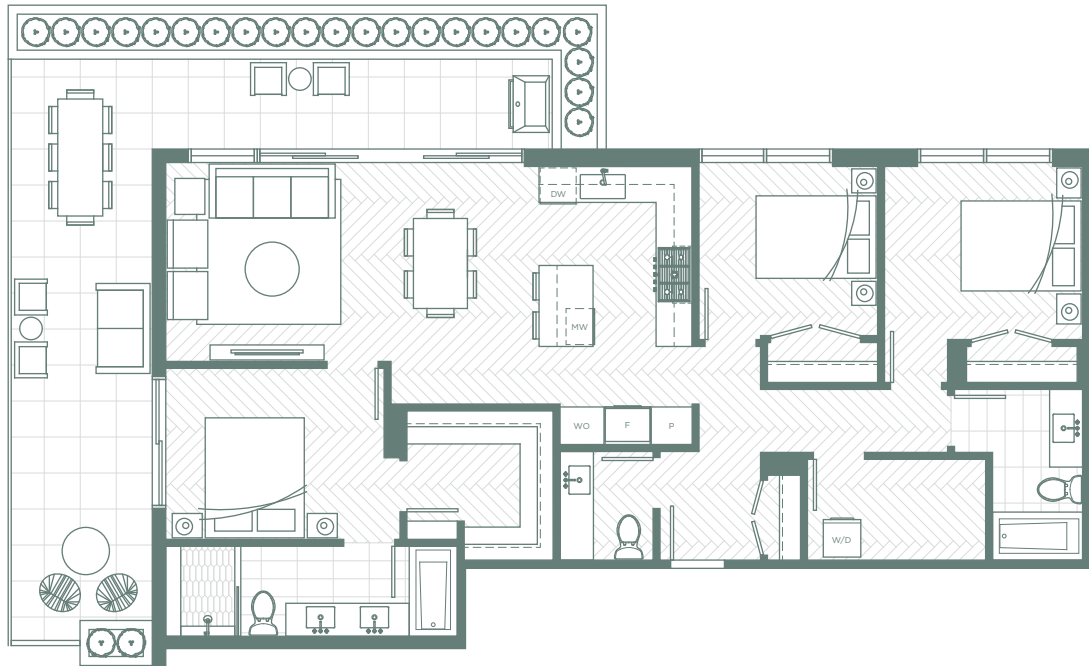


Plan D5

2 BEDROOM + DEN + STORAGE, 2.5 BATH
INTERIOR AREA: 1,271 SF
EXTERIOR AREA: 302 SF

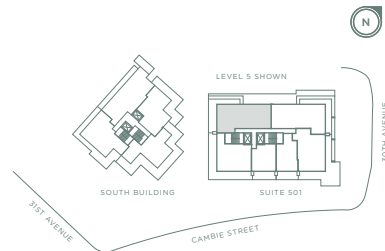


The developer reserves the right to modify or make substitutes to the building design, specifications and floorplans should they be necessary. Renderings, views, and layouts are for illustration purposes only. Sales by MLA Canada Realty, E.B.O.E.



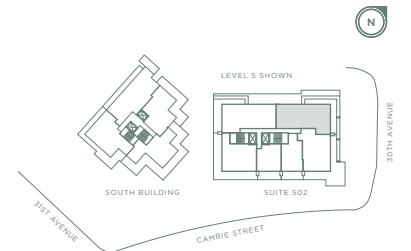
Plan E

3 BEDROOM + STORAGE, 2.5 BATH
INTERIOR AREA: 1,268 SF
EXTERIOR AREA: 360 SF

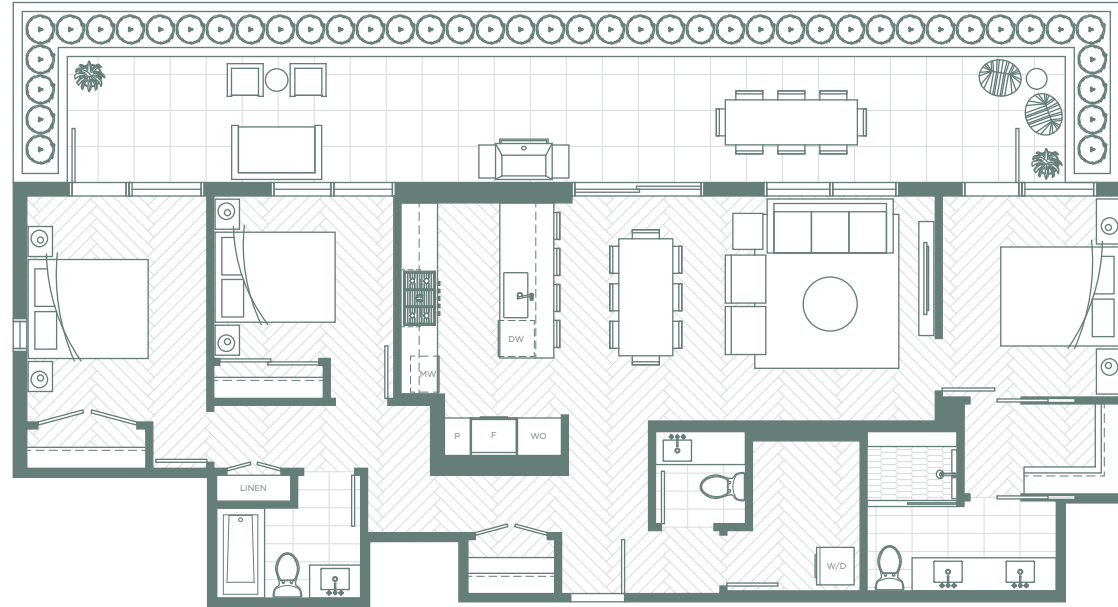


Plan E1

3 BEDROOM + STORAGE, 2.5 BATH
INTERIOR AREA: 1,274 SF
EXTERIOR AREA: 321 SF

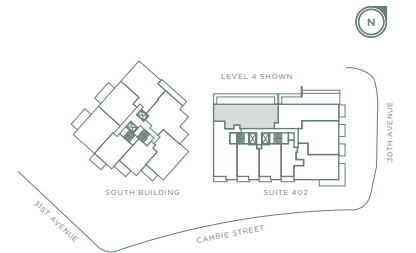


The developer reserves the right to modify or make substitutes to the building design, specifications and floorplans should they be necessary. Renderings, views, and layouts are for illustration purposes only. Sales by MLA Canada Realty, E.B.O.E.



Plan E2

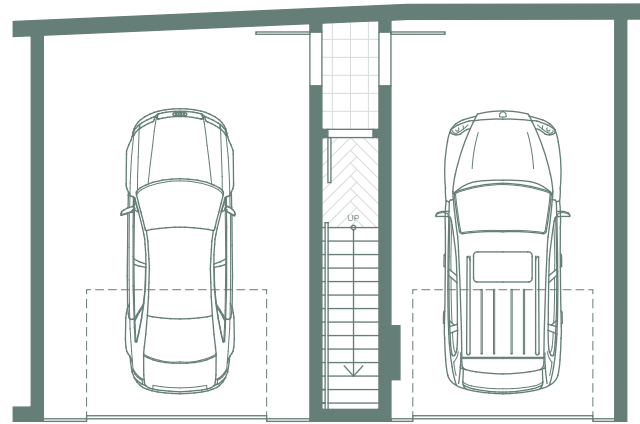
3 BEDROOM + STORAGE, 2.5 BATH
INTERIOR AREA: 1,310 SF
EXTERIOR AREA: 388 SF



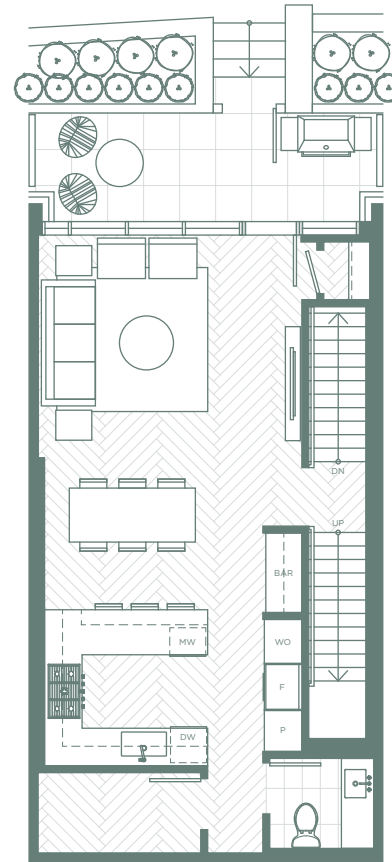
The developer reserves the right to modify or make substitutes to the building design, specifications and floorplans should they be necessary. Renderings, views, and layouts are for illustration purposes only. Sales by MLA Canada Realty, E.B.O.E.



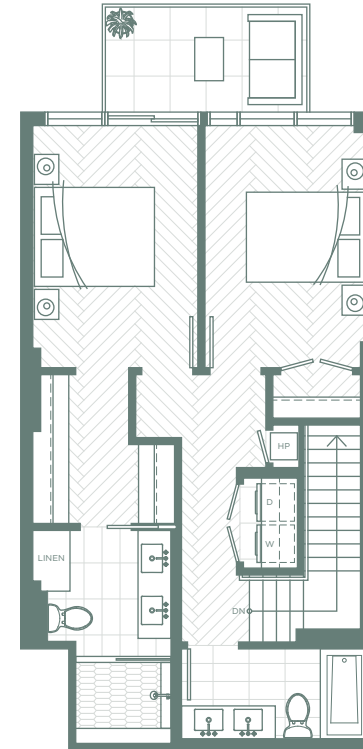
TOWNHOMES / TH1



Enclosed Garage



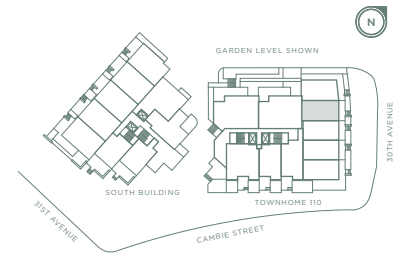
Garden Level



Level 2

TH1

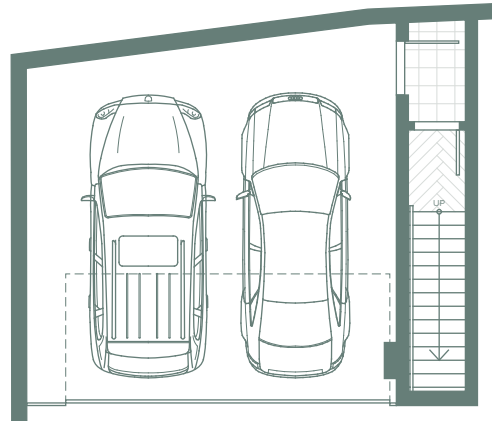
- 2 BEDROOM + STORAGE, 2.5 BATH
- INTERIOR AREA: 1,405 SF
- EXTERIOR AREA: 180 SF
- ENCLOSED GARAGE: 667 SF



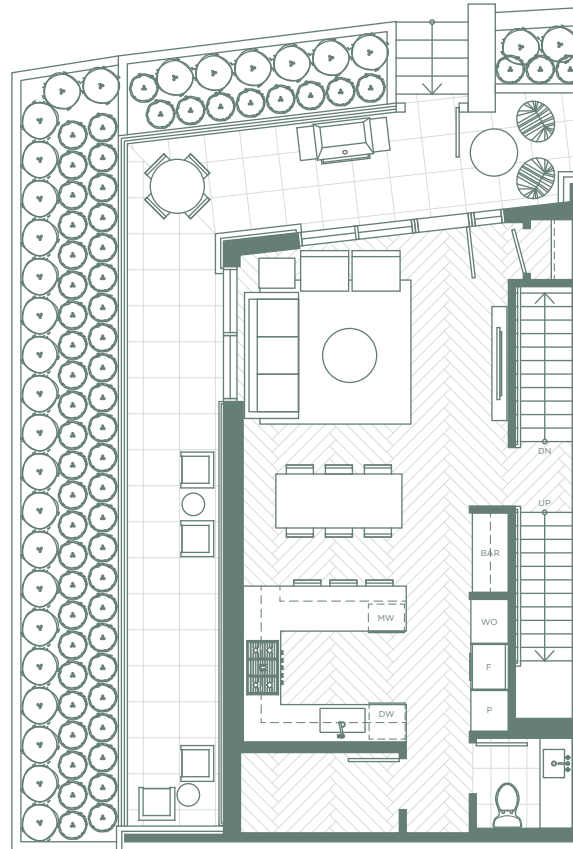
The developer reserves the right to modify or make substitutes to the building design, specifications and floorplans should they be necessary. Renderings, views, and layouts are for illustration purposes only. Sales by MLA Canada Realty, E.B.O.E.



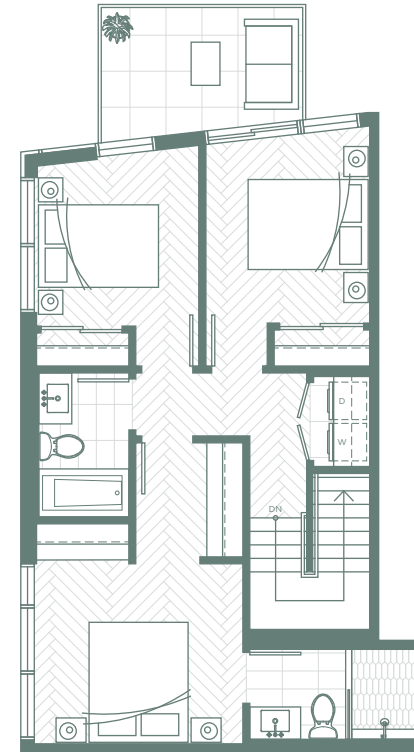
TOWNHOMES / TH2



Enclosed Garage



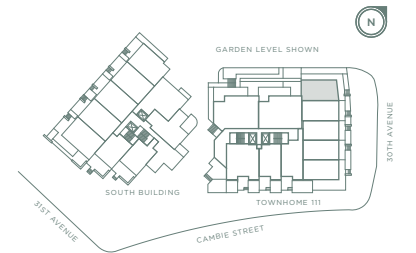
Garden Level



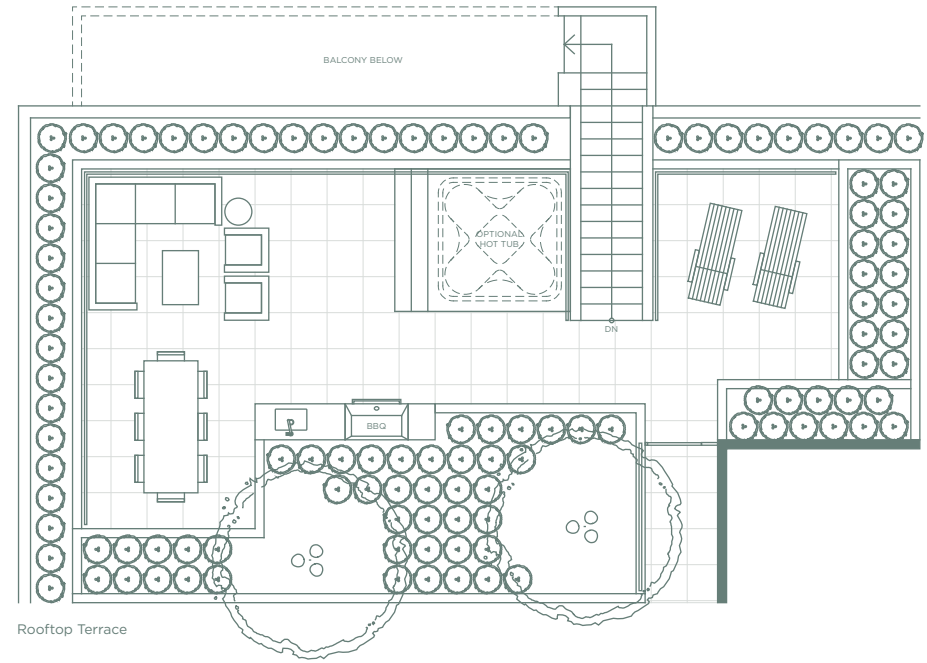
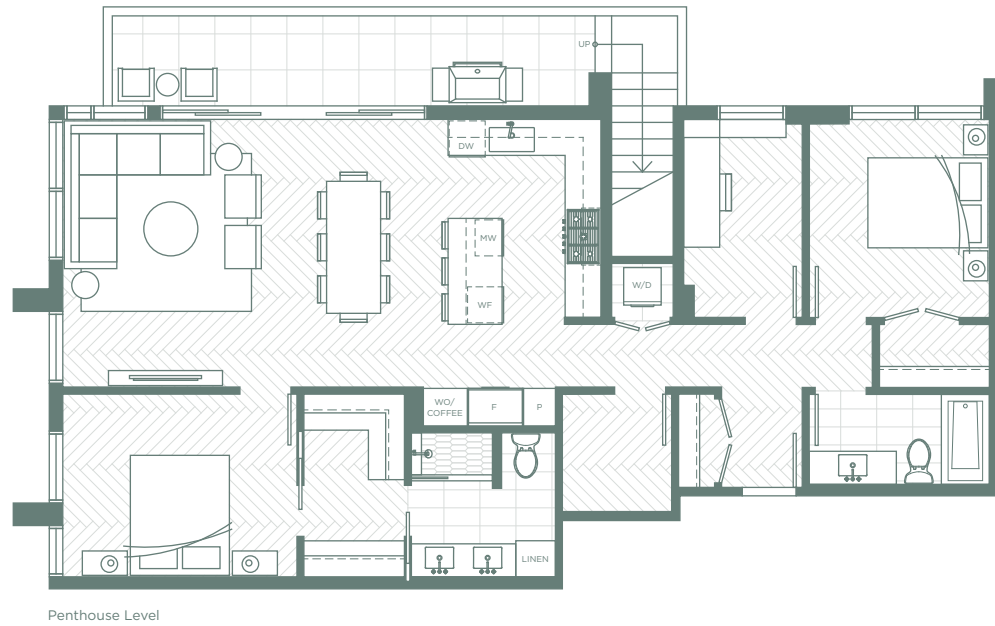
Level 2

TH2

- 3 BEDROOM + STORAGE, 2.5 BATH
- INTERIOR AREA: 1,423 SF
- EXTERIOR AREA: 393 SF
- ENCLOSED GARAGE: 459 SF



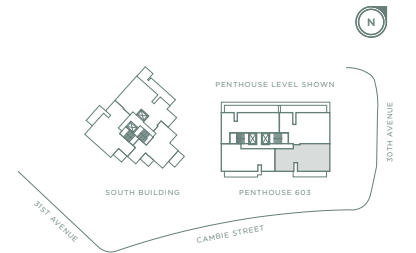
The developer reserves the right to modify or make substitutes to the building design, specifications and floorplans should they be necessary. Renderings, views, and layouts are for illustration purposes only. Sales by MLA Canada Realty, E.B.O.E.

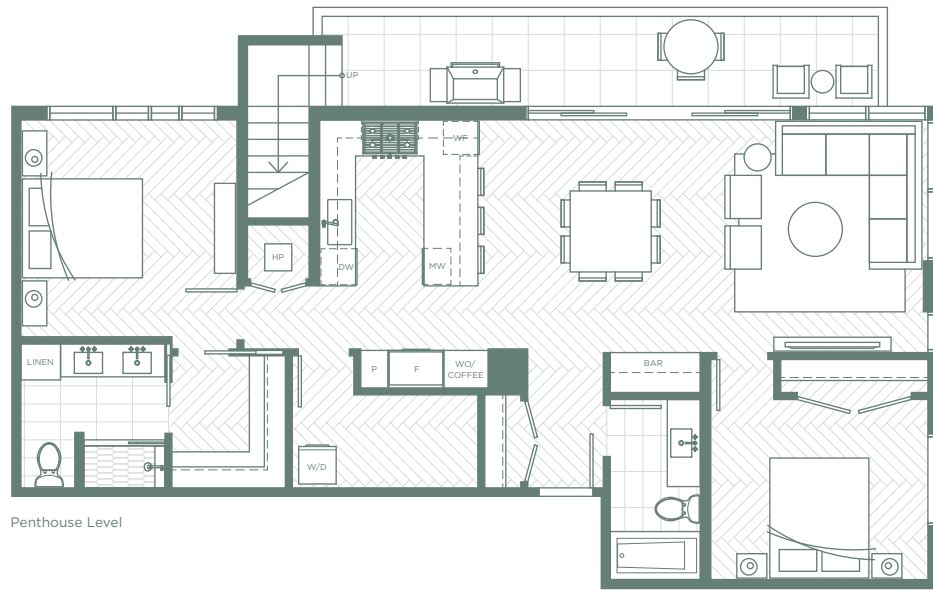


Elm Penthouse

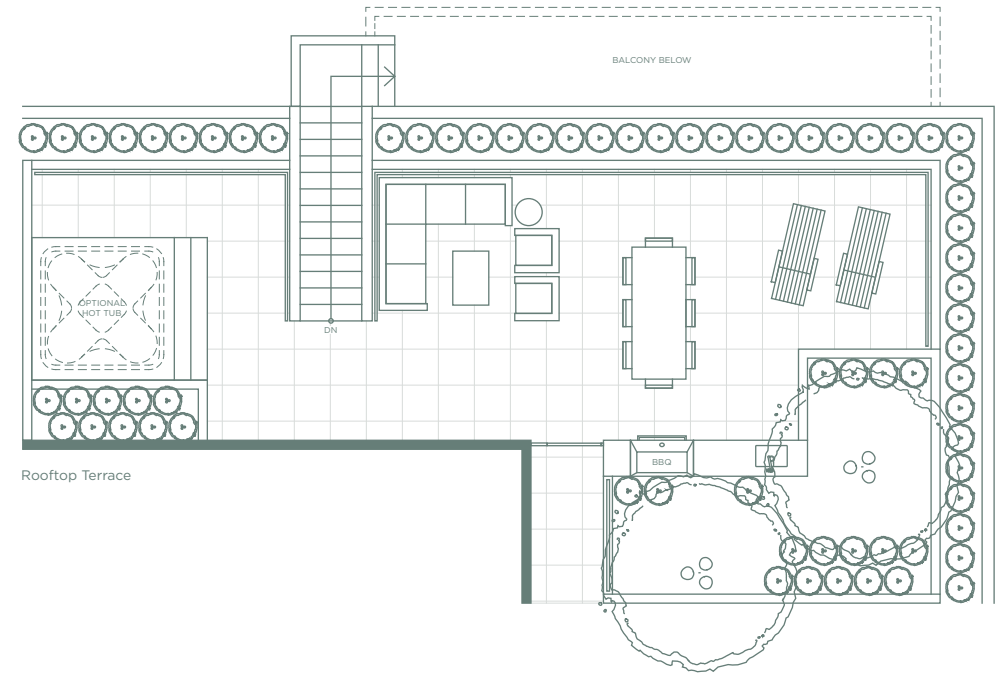
2 BEDROOM + DEN + STORAGE, 2 BATH
INTERIOR AREA: 1,308 SF
EXTERIOR AREA: 871 SF

The developer reserves the right to modify or make substitutes to the building design, specifications and floorplans should they be necessary. Renderings, views, and layouts are for illustration purposes only. Sales by MLA Canada Realty, E.S.O.E.





Penthouse Level



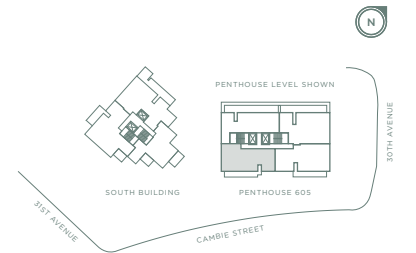
Rooftop Terrace

Sequoia Penthouse

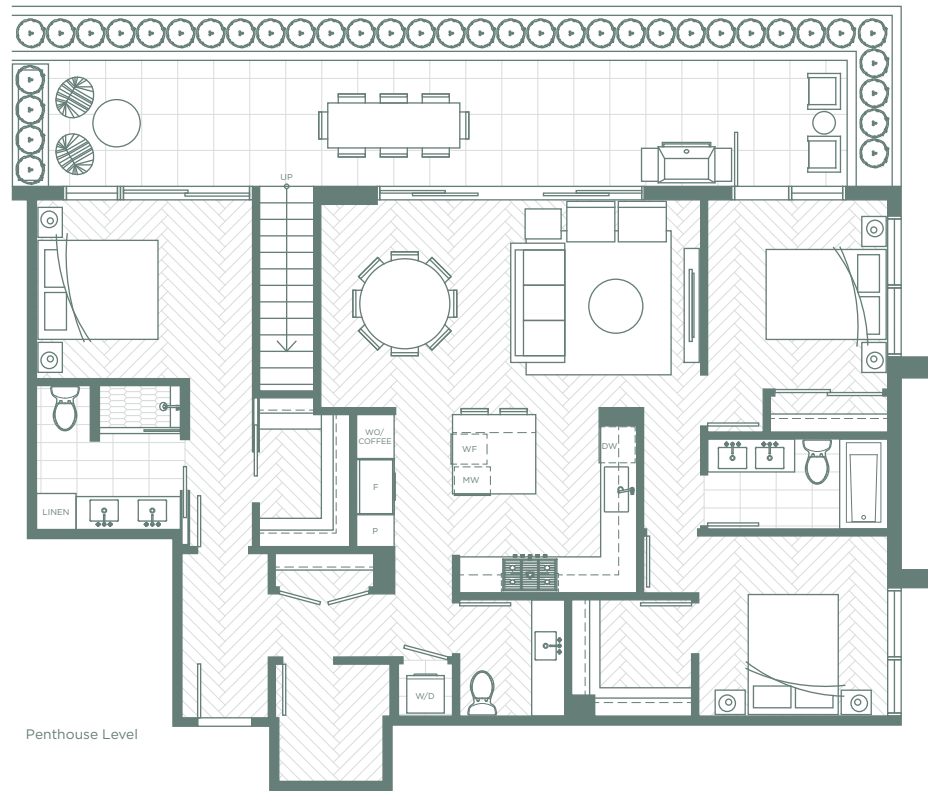
2 BEDROOM + STORAGE, 2 BATH

INTERIOR AREA: 1,235 SF

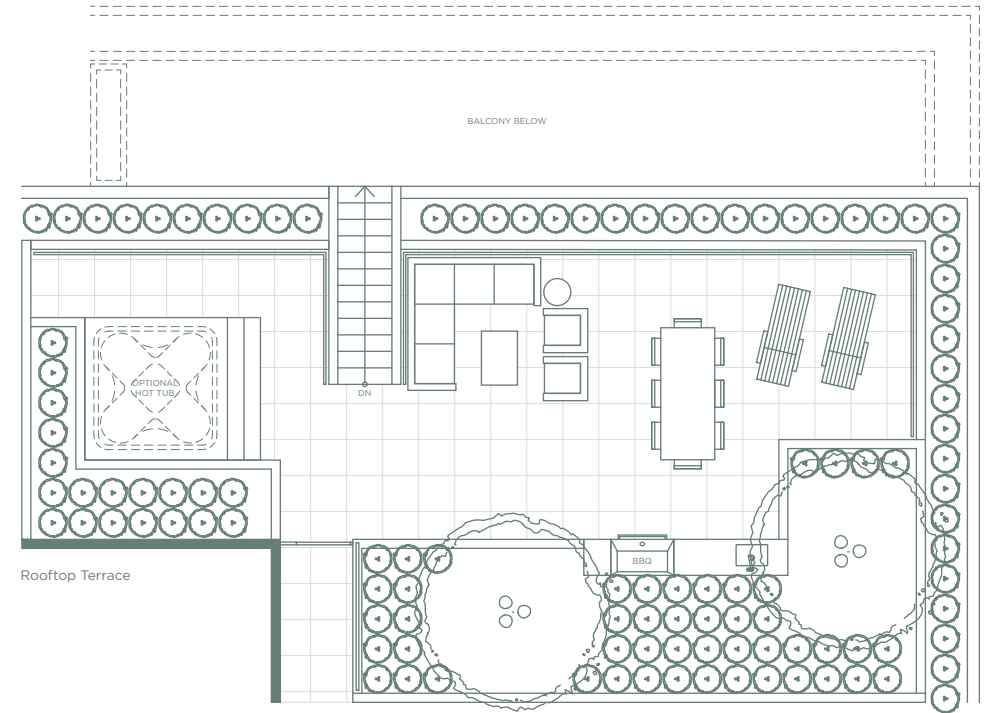
EXTERIOR AREA: 818 SF



The developer reserves the right to modify or make substitutes to the building design, specifications and floorplans should they be necessary. Renderings, views, and layouts are for illustration purposes only. Sales by MLA Canada Realty, E.B.O.E.



Penthouse Level



Rooftop Terrace

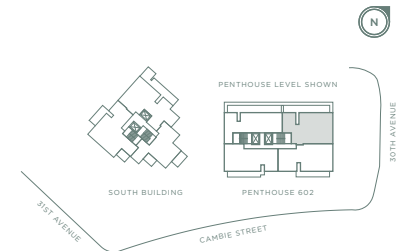
Napa Penthouse

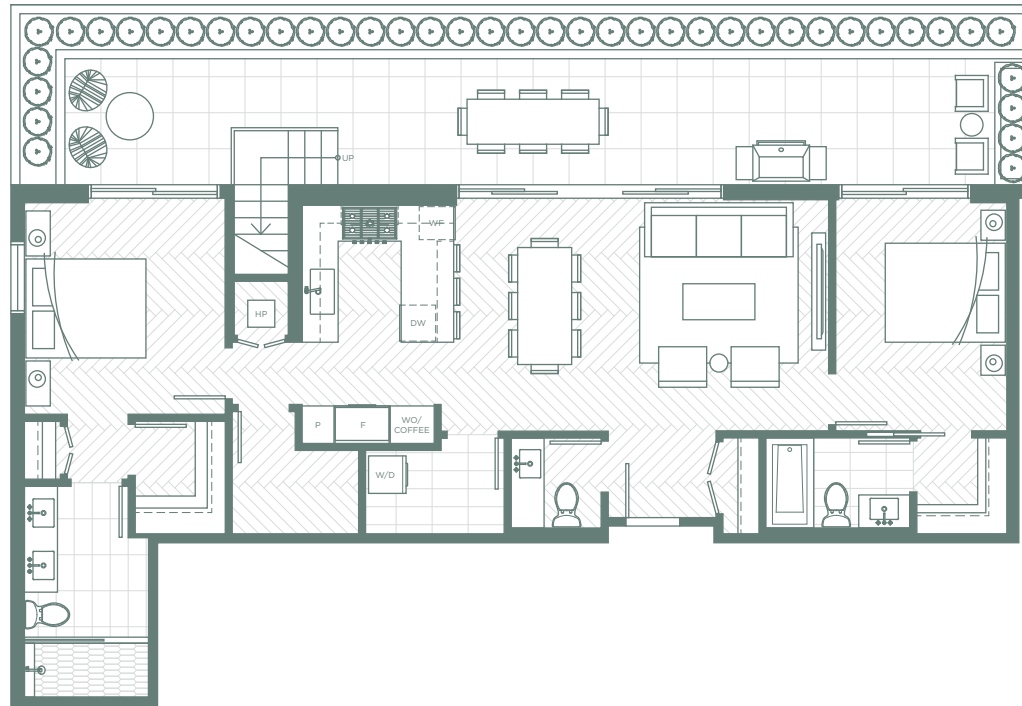
3 BEDROOM + STORAGE, 2.5 BATH

INTERIOR AREA: 1,377 SF

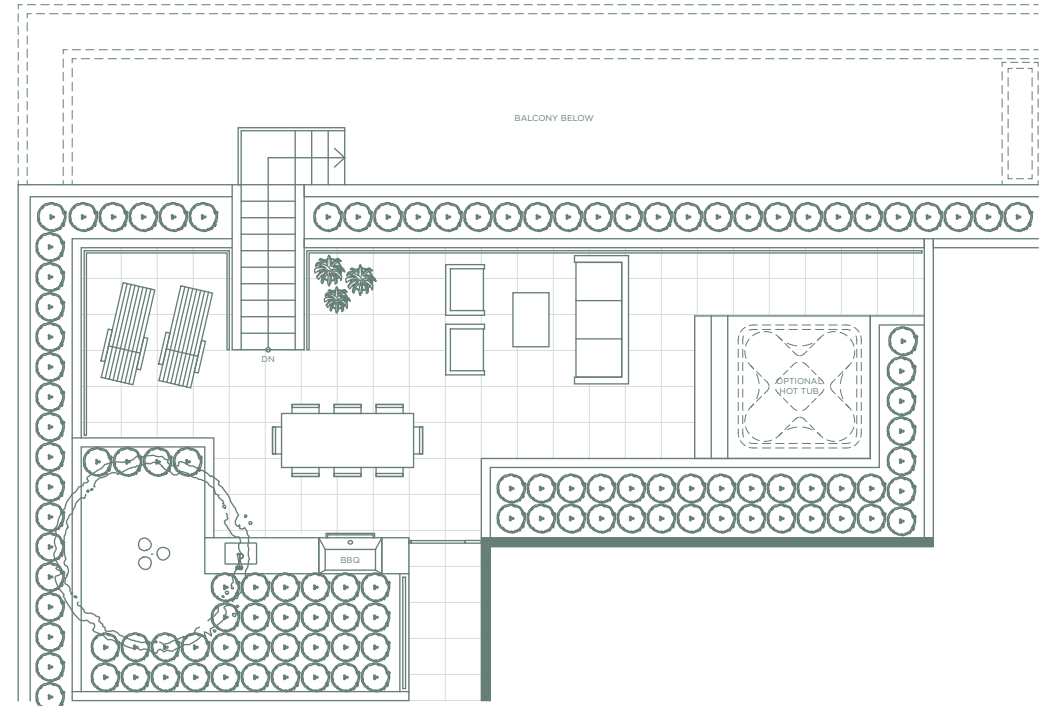
EXTERIOR AREA: 998 SF

The developer reserves the right to modify or make substitutes to the building design, specifications and floorplans should they be necessary. Renderings, views, and layouts are for illustration purposes only. Sales by MLA Canada Realty, E.B.O.E.





Penthouse Level



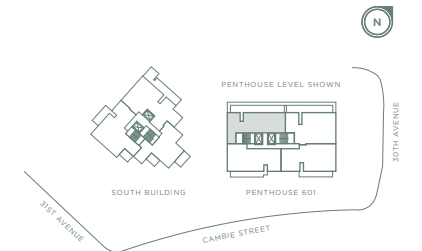
Rooftop Terrace

Willow Penthouse

2 BEDROOM + STORAGE, 2.5 BATH

INTERIOR AREA: 1,182 SF

EXTERIOR AREA: 1,006 SF



The developer reserves the right to modify or make substitutes to the building design, specifications and floorplans should they be necessary. Renderings, views, and layouts are for illustration purposes only. Sales by MLA Canada Realty, E.B.O.E.



Features

Timeless Interiors

- SOPHISTICATED AND THOUGHTFULLY DESIGNED RESIDENCES BUILT BY CRESSEY DEVELOPMENT GROUP WITH INTERIOR DESIGN BY INSIGHT DESIGN GROUP
- CONCRETE CONSTRUCTION PROVIDES QUIET LIVING AND ADDITIONAL PRIVACY BETWEEN HOMES
- SELECT FROM TWO COLOUR PALETTES
 - PARKSIDE (DARK/WALNUT)
 - UPTOWN (LIGHT/OAK)
- 8'10" CEILINGS THROUGHOUT
- CLASSIC HERRINGBONE-PATTERNED HARDWOOD FLOORING THROUGHOUT
- SOLID-CORE DOORS WITH A CONTEMPORARY SHAKER PROFILE FOR EVERY ROOM AND CLOSET
- CUSTOM MILLWORK CLOSETS BRING STYLE AND PRACTICALITY TO ALL MASTER BEDROOMS
- EFFICIENT, FORCED-AIR HEATING AND AIR CONDITIONING FOR YEAR-ROUND COMFORT
- FRONT-LOADING, ENERGY-EFFICIENT BLOMBERG WASHER AND DRYER
- LARGE STORAGE ROOMS IN MOST HOMES

The CresseyKitchen™

- THE CRESSEYKITCHEN™ IS RENOWNED FOR ITS FUNCTIONAL WALK-THROUGH LAYOUT, AMPLE STORAGE SPACE, AND SEAMLESS DESIGN
- DESIGNER APPLIANCE COLLECTION INCLUDES:
 - 30" SUB-ZERO INTEGRATED REFRIGERATOR WITH BOTTOM ROLL-OUT FREEZER, ICE MAKER, AND INTERNAL WATER DISPENSER
 - 36" WOLF 5-BURNER GAS COOKTOP WITH FLUSH INTEGRATION INTO COUNTERTOP
 - SLEEK HOOD FAN INTEGRATED SEAMLESSLY INTO CUSTOM CABINETRY
 - 30" WOLF STAINLESS-STEEL WALL OVEN WITH ADVANCED DUAL VERTICROSS CONVECTION SYSTEM FOR FASTER PREHEATS AND CONSISTENT COOKING ACROSS ALL RACKS
 - STAINLESS-STEEL MICROWAVE WITH INTEGRATED TRIM KIT
 - FULLY-INTEGRATED, HIGH-CAPACITY, ENERGY- AND WATER-EFFICIENT BOSCH DISHWASHER WITH ULTRA-QUIET OPERATION
- SINGLE-BOWL, PREMIUM 16-GAUGE, STAINLESS-STEEL, UNDER-MOUNT KITCHEN SINK WITH FOOD WASTE DISPOSAL AND ACCESSORIES
- DURABLE AND EASY-TO-CLEAN QUARTZ COUNTERTOPS WITH PORCELAIN SLAB BACKSPLASH
- CONTEMPORARY RAISED-PANEL, PAINTED CABINETRY WITH DECORATIVE CABINET PULLS ON LOWER CABINETS
- UNDER-CABINET LIGHTING

Elegant Bathrooms

- QUARTZ COUNTERTOP AND BACKSPLASH IN MASTER ENSUITE
- QUARTZ-TILED CURB AND BENCH* IN MASTER ENSUITE SHOWER (*SELECT MASTER ENSUITES)
- OVERSIZED, BLACK-FRAMED SHOWERS IN MASTER ENSUITES FEATURING HIDDEN LINEAR DRAIN, SPA-LIKE RAIN-SHOWER, AND HAND-HELD SHOWER WAND
- HEATED FLOORING
- RAISED PANEL WOOD-VENEER CABINETRY
- CONTEMPORARY UNDER-MOUNT SINKS WITH POLISHED CHROME KOHLER FAUCETS

Additional Features

- LARGE PRIVATE PATIOS OR BALCONIES IN ALL HOMES PROVIDE SWEEPING VIEWS OF THE CITY AND MOUNTAINS OR QUEEN ELIZABETH PARK
- LEED GOLD-CERTIFIED BUILDING, AND BUILT TO THE MOST STRINGENT ENERGY REQUIREMENTS:
 - HIGH EFFICIENCY HEATING AND COOLING
 - HIGH EFFICIENCY BUILDING ENVELOPE TO REDUCE ENERGY USAGE AND INCREASE YEAR-ROUND COMFORT
 - STATE-OF-THE-ART STORM-WATER MANAGEMENT
 - HIGH EFFICIENCY LIGHTING THROUGHOUT ALL HOMES AND COMMON AREAS
- FULLY-EQUIPPED GYM AND SOCIAL LOUNGE WITH ADJACENT OUTDOOR AMENITY APPOINTED WITH A BARBEQUE, DINING AREAS, COMMUNAL GARDEN PLOTS, AND A CHILDREN'S PLAY AREA

Exclusive Penthouse Features

- 36" SUB-ZERO INTEGRATED REFRIGERATOR WITH BOTTOM ROLL-OUT FREEZER, ICE MAKER, AND INTERNAL WATER DISPENSER
- 24" SUB-ZERO UNDER-COUNTER WINE FRIDGE WITH TWO INDEPENDENT TEMPERATURE ZONES
- WOLF 24" STAINLESS-STEEL INTEGRATED COFFEE SYSTEM
- FULLY-OUTFITTED ROOFTOP TERRACES INCLUDING BUILT-IN BARBEQUES, SINKS, AND OPTIONAL HOT-TUBS
- INDIVIDUALLY ENCLOSED GARAGES WITH 2 PARKING STALLS AND A PREWIRED OUTLET FOR ELECTRICAL VEHICLE CHARGING STATIONS